

Connah's Quay Low Carbon Power

Environmental Statement Volume III Figure 8-19: FEED 2 Abated Scenario, Maximum 24-hour Mean Amines Process Contribution

Planning Inspectorate Reference: EN010166

Document Reference: EN010166/APP/6.3

Planning Act 2008 (as amended)






Infrastructure Planning (Applications: Prescribed Forms and Procedure) Regulations
2009 - Regulation 5(2)(a)

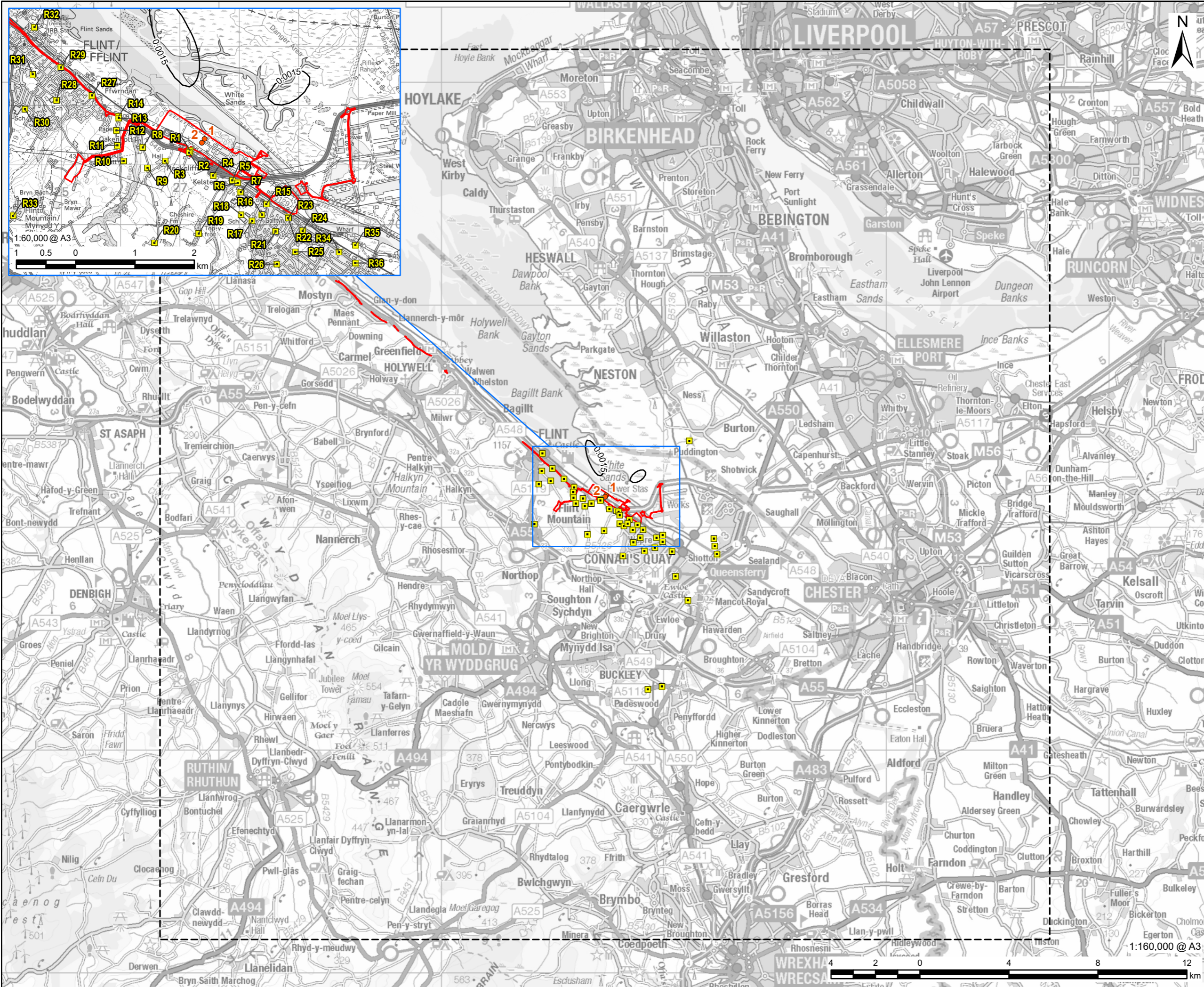
Revision 01

March 2026

PROJECT
Connah's Quay Low
Carbon Power

CONSULTANT
AECOM Limited
The Colmore Building
Colmore Circus, Queensway
Birmingham, B4 6AT
www.aecom.com

- LEGEND**
-  Order limits
 -  Model Domain
 -  Feed 2 - Absorber Stack
 -  Human Health Receptor
 -  Maximum 24-hour Mean Long-term Amines Process Contribution ($\mu\text{g}/\text{m}^3$)



NOTES
© Crown Copyright 2025. All rights reserved.
Ordnance Survey Licence AC0000808122.
Contains OS data © Crown copyright 2025.

ISSUE PURPOSE
Environmental Statement

DATE
March 2026

PROJECT NUMBER
60768754

FIGURE TITLE
FEED 2 Abated Scenario, Maximum
24-hour Mean Long-term Amines
Process Contribution

FIGURE NUMBER
Figure 8-19

This drawing has been prepared for the use of AECOM's client. It may not be used, modified, reproduced or relied upon by third parties, except as signed by AECOM or as required by law. AECOM accepts no responsibility, and denies any liability whatsoever, to any party that uses or relies on this drawing without AECOM's express written consent. Do not scale this document. All measurements must be obtained from the stated dimensions.